

Long Lane

Uxbridge • London • UB10 9JY
PCM: £1,450 PCM



coopers
est 1986

Presented to the market this two bedroom apartment located on Hillingdon Circus. The property is located just a stones throw away from the A40, M40 and Hillingdon Tube Station offering fantastic transport links in to London. This property comprises of Two double bedrooms, large reception room, fully fitted kitchen and bathroom. Part Furnished.

Parking available for an additional £100.00pcm.

Moments from Hillingdon Station

Metropolitan/Piccadilly line

Modern Kitchen

Two Double Bedrooms

Private Entrance

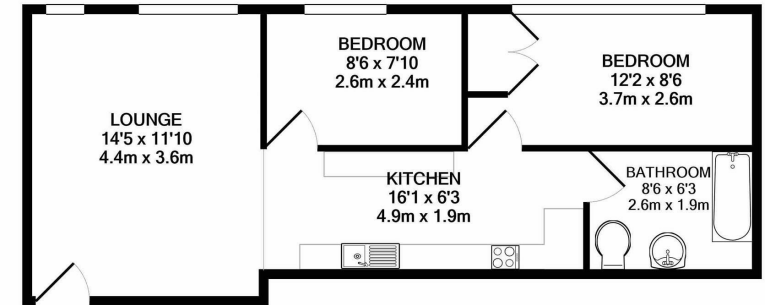
Gas Central Heating

Stones Throw From Local Shops

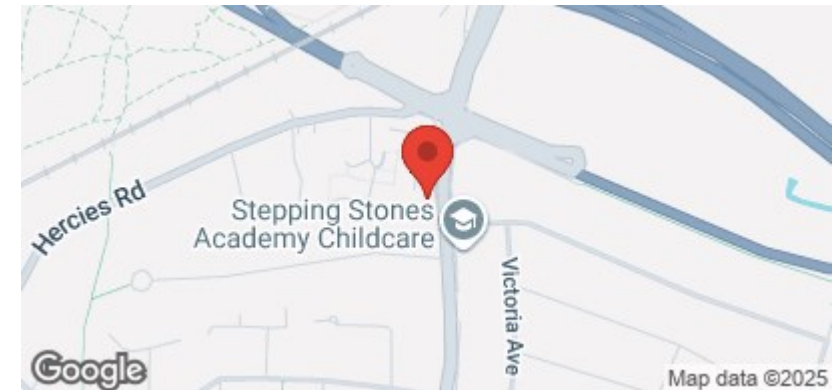
Modern Bathroom

Newly Refurbished

Part Furnished



Whilst every attempt has been made to ensure the accuracy of the floor plan contained here, measurements of doors, windows, rooms and any other items are approximate and no responsibility is taken for any error, omission, or mis-statement. This plan is for illustrative purposes only and should be used as such by any prospective purchaser. The services, systems and appliances shown have not been tested and no guarantee as to their operability or efficiency can be given
Made with Metropix ©2019



Available Date

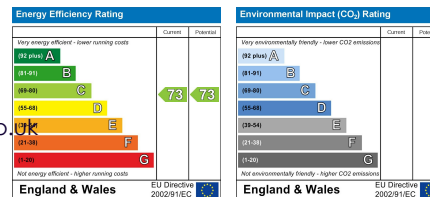
30th November 2024

01895 257 566

**1 Vine Street, Uxbridge,
Middlesex, UB8 1QE**

propertymanagement@coopersresidential.co.uk

CoopersResidential.co.uk



Important Notice: These particulars, whilst believed to be accurate are set out as a general outline only for guidance and do not constitute any part of an offer or contract. Intending purchasers should not rely on them as statements or representation of fact, but must satisfy themselves by inspection or otherwise has the authority to make or give any representation or warranty in respect of the property.

coopers
est 1986